



Village of Clive

2024 Return on Investment

Benefits to your Library

Total Financial Benefits

\$266,497.70

Return on Investment

\$1.00 = \$35.27

Based on a population of **823**, the cost of membership to the Parkland Regional Library System for the Village of Clive was **\$7,555.14** in 2024.

Cost benefits of PRLS services

The **direct financial return** as a result of membership to Parkland Regional Library System to Clive Public Library:

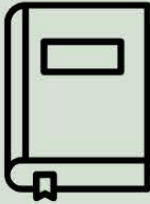
2024 materials allotment	\$ 929.99
Rural Library Services Grant	\$ 10,959.20
Allotment from Paintearth County 1	\$ 2,310.85
Computers for library use	\$ -
Software & Licensing	\$ 2,681.25
SuperNet Connection	\$ 6,483.60
Items borrowed from other libraries 2	\$ 206,868.75
Digital items borrowed from PRLS 3	\$ 36,264.06
Combined Savings	\$ 266,497.70

1 Lacombe County assigned a rural population of 2,045 to the Village of Clive

2 Average price of an item \$46.75

3 Average price of an eBook \$40.06, average price of an eAudiobook \$84.26

2024 Quick Facts



664,784 items
in the collection



1,310,828 physical items
circulated



44,398 items added
to the catalog



26,029
cardholders



925,450 items
sent on van runs



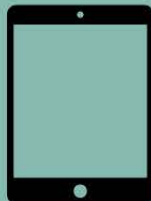
1,514 consulting
sessions



Over **170**
attendees at the
2024 PRLS
Conference



1,269,757 Wifi
usages



156,839 digital items
circulated



58,104 eLibrary
sessions

Other Parkland Facts:

- Provides access to virtual materials across the province through TRAC.
- Provides training for libraries, boards, friends' groups and more.
- Provides centralized IT support on hardware, software, internet, SuperNet.
- Provides access to shared regional collections of books, tech, program kits, and much more.