

Village of Bawlf

2024 Return on Investment

Benefits to your Library

Total Financial Benefits

\$115,226.19

Return on Investment

\$1.00 = \$29.53

Based on a population of **425**, the cost of membership to the Parkland Regional Library System for the Village of Bawlf was **\$3901.50** in 2024.

Cost benefits of PRLS services

The **direct financial return** as a result of membership to Parkland Regional Library System to David Knipe Memorial Library:

| | | |
|---------------------------------------|----|---------------------|
| 2024 materials allotment | \$ | 480.25 |
| Rural Library Services Grant | \$ | 6,983.20 |
| Allotment from Camrose County 1 | \$ | 1,272.38 |
| Allotment from Village of Rosalind 2 | \$ | 207.92 |
| Computers for library use | \$ | 1,068.32 |
| Software & Licensing | \$ | 2,596.04 |
| SuperNet Connection | \$ | 6,483.60 |
| Items borrowed from other libraries 3 | \$ | 81,158.00 |
| Digital items borrowed from PRLS 4 | \$ | 14,976.48 |
| Combined Savings | | \$115,226.19 |

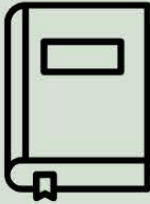
1 Camrose County assigned a rural population of 1,126 to the David Knipe Memorial Library

2 Village of Rosalind assigned its population of 184 to David Knipe Memorial Library

3 Average price of a physical item \$41.61

4 Average price of an eBook \$40.06, average price of an eAudiobook \$84.26

2024 Quick Facts



664,784 items
in the collection



1,310,828 physical items
circulated



44,398 items added
to the catalog



26,029
cardholders



925,450 items
sent on van runs



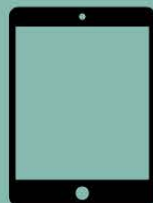
1,514 consulting
sessions



Over **170**
attendees at the
2024 PRLS
Conference



1,269,757 Wifi
usages



156,839 digital items
circulated



58,104 eLibrary
sessions

Other Parkland Facts:

- Provides access to virtual materials across the province through TRAC.
- Provides training for libraries, boards, friends' groups and more.
- Provides centralized IT support on hardware, software, internet, SuperNet.
- Provides access to shared regional collections of books, tech, program kits, and much more.