

# Town of Rimbey

## 2024 Return on Investment

### Benefits to your Library

#### Total Financial Benefits

**\$789,628.83**

#### Return on Investment

**\$1.00 = \$32.77**

Based on a population of **2,625**, the cost of membership to the Parkland Regional Library System for the Town of Rimbey was **\$24,097.50** in 2024.

### Cost benefits of PRLS services

The **direct financial return** as a result of membership to Parkland Regional Library System to Rimbey Municipal Library:

2024 materials allotment	\$ 2,966.25
Rural Library Services Grant	\$ 28,313.60
Allotment from S.V. of Parkland Beach 1	\$ 174.02
Allotment from Ponoka County 2	\$ 5,860.18
Computers for library use	\$ 6,409.92
Software & Licensing	\$ 7,913.78
SuperNet Connection	\$ 10,242.00
Items borrowed from other libraries 3	\$ 606,441.00
Digital items borrowed from PRLS 4	\$ 121,308.08
<b>Combined Savings</b>	<b>\$789,628.83</b>

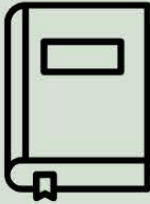
1 S.V. of Parkland Beach assigned a rural population of 154 to the Rimbey Municipal Library

2 Ponoka County assigned its population of 5,186 to Rimbey Municipal Library

3 Average price of a physical item \$41.61

4 Average price of an eBook \$40.06, average price of an eAudiobook \$84.26

# 2024 Quick Facts



**664,784** items  
in the collection



**1,310,828** physical items  
circulated



**44,398** items added  
to the catalog



**26,029**  
cardholders



**925,450** items  
sent on van runs



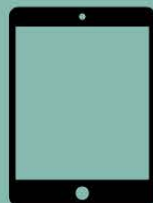
**1,514** consulting  
sessions



Over **170**  
attendees at the  
2024 PRLS  
Conference



**1,269,757** Wifi  
usages



**156,839** digital items  
circulated



**58,104** eLibrary  
sessions

## Other Parkland Facts:

- Provides access to virtual materials across the province through TRAC.
- Provides training for libraries, boards, friends' groups and more.
- Provides centralized IT support on hardware, software, internet, SuperNet.
- Provides access to shared regional collections of books, tech, program kits, and much more.