

Town of Bentley

2024 Return on Investment

Benefits to your Library

Total Financial Benefits

\$478,639.81

Return on Investment

\$1.00 = \$50.28

Based on a population of **1,037**, the cost of membership to the Parkland Regional Library System for the Town of Bentley was **\$9,519.66** in 2024.

Cost benefits of PRLS services

The **direct financial return** as a result of membership to Parkland Regional Library System to Bentley Municipal Library:

2024 materials allotment	\$	1,171.81
Rural Library Services Grant	\$	10,550.40
Allotment from Lacombe County 1	\$	2,015.92
Allotment from S.V. of Gull Lake 2	\$	228.26
Computers for library use	\$	-
Software & Licensing	\$	4,663.88
SuperNet Connection	\$	6,483.60
Items borrowed from other libraries 3	\$	372,504.00
Digital items borrowed from PRLS 4	\$	81,021.94
Combined Savings		\$478,639.81

1 Lacombe County assigned a rural population of 1,784 to the Bentley Municipal Library

2 S.V. of Gull Lake assigned its population of 202 to Bentley Municipal Library

3 Average price of a physical item \$41.61

4 Average price of an eBook \$40.06, average price of an eAudiobook \$84.26

2024 Quick Facts



664,784 items
in the collection



1,310,828 physical items
circulated



44,398 items added
to the catalog



26,029
cardholders



925,450 items
sent on van runs



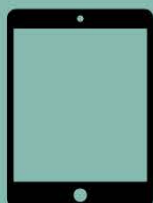
1,514 consulting
sessions



Over **170**
attendees at the
2024 PRLS
Conference



1,269,757 Wifi
usages



156,839 digital items
circulated



58,104 eLibrary
sessions

Other Parkland Facts:

- Provides access to virtual materials across the province through TRAC.
- Provides training for libraries, boards, friends' groups and more.
- Provides centralized IT support on hardware, software, internet, SuperNet.
- Provides access to shared regional collections of books, tech, program kits, and much more.