

Red Deer County

2024 Return on Investment

Benefits to your County

Total Financial Benefits

\$3,745,235.63

Return on Investment

\$1.00 = \$18.60

Based on a population of **21,930**, the cost of membership to the Parkland Regional Library System for Red Deer County was **\$201,317.40** in 2024.

Cost benefits of PRLS services

The **direct financial return** as a result of membership to Parkland Regional Library System to Red Deer County patrons:

2024 materials allotment	\$ 24,780.90
Rural Library Services Grant 1	\$ 109,429.60
PRLS contribution to Spruce View Library	\$ 200.00
Computers for outlet library use	\$ 2,136.64
Software & licensing for outlet library	\$ 2,596.04
SuperNet connection for outlet library	\$ 6,483.60
7,430 non-resident households 2 (from the 2021 Federal Census)	\$ 445,800.00
Total county patron checkouts and renewals 3	\$ 2,575,367.73
Digital items borrowed from PRLS	\$ 578,441.12

Combined Savings

\$3,745,235.63

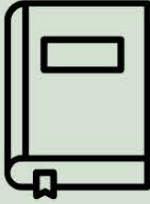
¹ Red Deer County's rural population of 19,541 was distributed to Red Deer County Libraries

² Number of county families can save the \$60 non-resident fee

³ Average cost of a physical item is \$41.61

Bowden, Delburne, Elnora, Innisfail, Penhold, Spruce View, and Sylvan Lake all have libraries serving Red Deer County

2024 Quick Facts



664,784 items
in the collection



1,310,828 physical items
circulated



44,398 items added
to the catalog



26,029
cardholders



925,450 items
sent on van runs



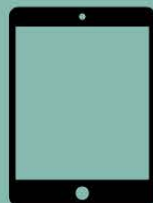
1,514 consulting
sessions



Over **170**
attendees at the
2024 PRLS
Conference



1,269,757 Wifi
usages



156,839 digital items
circulated



58,104 eLibrary
sessions

Other Parkland Facts:

- Provides access to virtual materials across the province through TRAC.
- Provides training for libraries, boards, friends' groups and more.
- Provides centralized IT support on hardware, software, internet, SuperNet.
- Provides access to shared regional collections of books, tech, program kits, and much more.