



# Ponoka County

## 2024 Return on Investment

### Benefits to your County

#### Total Financial Benefits

**\$2,526,235.22**

#### Return on Investment

**\$1.00 = \$26.53**

Based on a population of **10,372**, the cost of membership to the Parkland Regional Library System for Ponoka County was **\$95,214.96** in 2024.

### Cost benefits of PRLS services

The **direct financial return** as a result of membership to Parkland Regional Library System to county patrons:

2024 materials allotment	\$	11,720.36
Rural Library Services Grant 1	\$	54,913.60
3,689 non-resident households 2 (from the 2021 Federal Census)	\$	221,340.00
Total county patron checkouts and renewals 3	\$	1,872,033.90
Digital items borrowed from PRLS 4	\$	366,227.36
<b>Combined Savings</b>		<b>\$ 2,526,235.22</b>

1 Ponoka County assigned a rural population of 9,806 to the Ponoka County Libraries

2 Number of county families can save the \$60 non-resident fee

3 Average price of a physical item \$41.61, 4 Average cost of an eBook \$40.06, eAudiobook \$84.26

Ponoka and Rimbey have libraries serving Ponoka County

# 2024 Quick Facts



**664,784** items  
in the collection



**1,310,828** physical items  
circulated



**44,398** items added  
to the catalog



**26,029**  
cardholders



**925,450** items  
sent on van runs



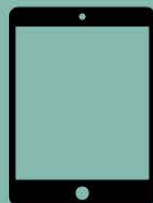
**1,514** consulting  
sessions



Over **170**  
attendees at the  
2024 PRLS  
Conference



**1,269,757** Wifi  
usages



**156,839** digital items  
circulated



**58,104** eLibrary  
sessions

## Other Parkland Facts:

- Provides access to virtual materials across the province through TRAC.
- Provides training for libraries, boards, friends' groups and more.
- Provides centralized IT support on hardware, software, internet, SuperNet.
- Provides access to shared regional collections of books, tech, program kits, and much more.