



# Lacombe County

## 2024 Return on Investment

### Benefits to your County

#### Total Financial Benefits

**\$2,993,277.49**

#### Return on Investment

**\$1.00 = \$30.17**

Based on a population of **10,807**, the cost of membership to the Parkland Regional Library System for Lacombe County was **\$99,208.26** in 2024.

### Cost benefits of PRLS services

The **direct financial return** as a result of membership to Parkland Regional Library System to county patrons:

2024 materials allotment	\$	12,211.91
Rural Library Services Grant 1	\$	57,920.80
3,973 non-resident households 2 (from the 2021 Federal Census)	\$	238,380.00
Total county patron checkouts and renewals 3	\$	2,195,842.92
Digital items borrowed from PRLS 4	\$	488,921.86
<b>Combined Savings</b>		<b>\$ 2,993,277.49</b>

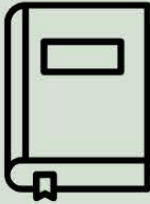
1 Lacombe County assigned a rural population of 10,343 to the Lacombe County Libraries

2 Number of county families can save the \$60 non-resident fee

3 Average price of a physical item \$41.61, 4 Average cost of an eBook \$40.06, eAudiobook \$84.26

Alix, Bentley, Blackfalds, Clive, Eckville, and Lacombe have libraries serving Lacombe County

# 2024 Quick Facts



**664,784** items  
in the collection



**1,310,828** physical items  
circulated



**44,398** items added  
to the catalog



**26,029**  
cardholders



**925,450** items  
sent on van runs



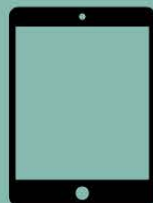
**1,514** consulting  
sessions



Over **170**  
attendees at the  
2024 PRLS  
Conference



**1,269,757** Wifi  
usages



**156,839** digital items  
circulated



**58,104** eLibrary  
sessions

## Other Parkland Facts:

- Provides access to virtual materials across the province through TRAC.
- Provides training for libraries, boards, friends' groups and more.
- Provides centralized IT support on hardware, software, internet, SuperNet.
- Provides access to shared regional collections of books, tech, program kits, and much more.