

Town of Rimbey

2025 Return on Investment

Benefits to your Library

Total Financial Benefits

\$790,088.57

Return on Investment

\$1.00 = \$32.61

Based on a population of **2,470**, the cost of membership to the Parkland Regional Library System for the Town of Rimbey was **\$24,230.70** in 2025.

Cost benefits of PRLS services

The **direct financial return** as a result of membership to Parkland Regional Library System to Rimbey Municipal Library:

2025 materials allotment	\$	2,791.10
Rural Library Services Grant	\$	23,066.40
Allotment from S.V. of Parkland Beach 1	\$	189.84
Allotment from Ponoka County 2	\$	4,743.74
Computers for library use	\$	2,366.71
Software & Licensing	\$	7,529.96
SuperNet Connection	\$	10,242.00
Items borrowed from other libraries 3	\$	600,672.00
Digital items borrowed from PRLS 4	\$	138,486.82
Combined Savings		\$790,088.57

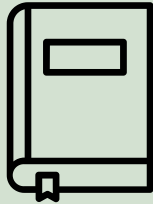
1 S.V. of Parkland Beach assigned a rural population of 168 to the Rimbey Municipal Library

2 Ponoka County assigned its population of 4,198 to Rimbey Municipal Library

3 Average price of a physical item \$48.00

4 Average price of an eBook \$45.82, average price of an eAudiobook \$86.37

2025 Quick Facts



613,251 items
in the collection



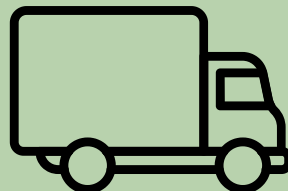
1,159,357 physical items
circulated



50,302 items added
to the catalog



34,679
cardholders



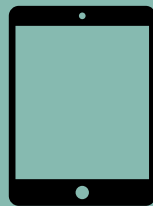
921,533 items
sent on van runs



1,741 consulting
sessions



142 attendees at
the 2025 PRLS
Conference



199,695 digital items
circulated



64,569 eLibrary
sessions



1,510,864 Wifi
usages

Other Parkland Facts:

- Provides access to virtual materials across the province through TRAC.
- Provides training for libraries, boards, friends' groups and more.
- Provides centralized IT support on hardware, software, internet, SuperNet.
- Provides access to shared regional collections of books, tech, program kits, and much more.